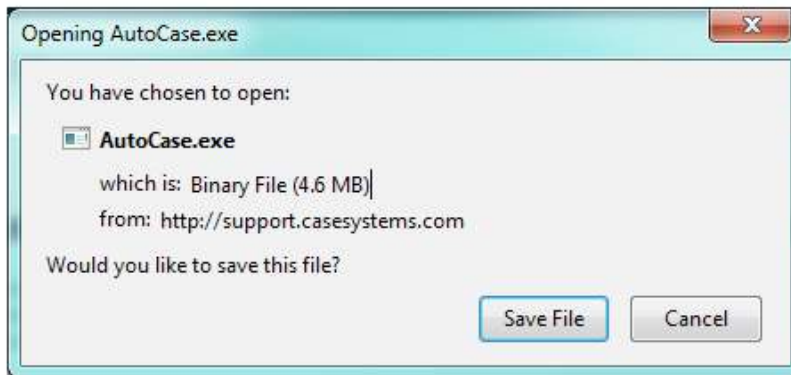


## AUTOCASE INSTRUCTIONS

Go to hyperlink <http://support.casesystems.com/downloads/AutoCase.exe>

1. The following dialog box will appear; Select Save File



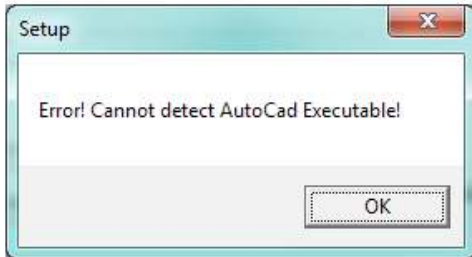
2. Find the saved Autocase .exe file on your computer and select Run.



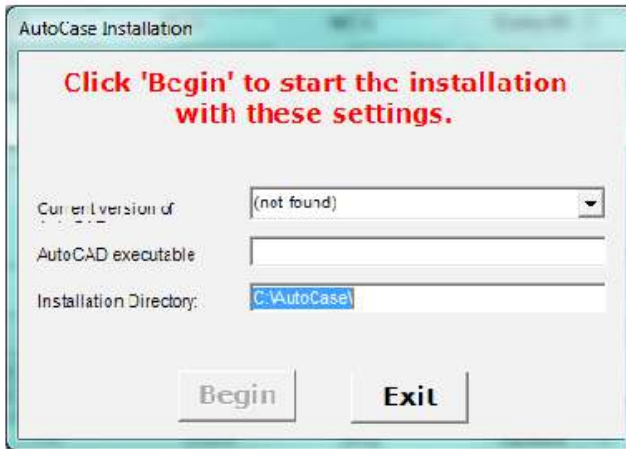
3. You will get the following prompt; Select Yes.



4. The files will extract and the following will appear, select OK.

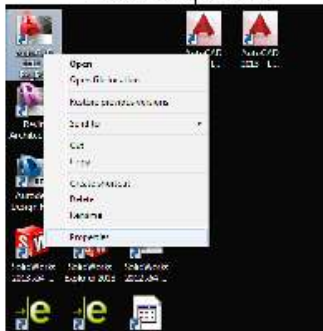


5. The following window will appear prompting you for your AutoCAD executable.



**The installation only recognizes version through 2005. If your version of AutoCAD is 2006 or later, you will need to find your AutoCAD executable location and typ, or copy and paste it into the AutoCAD executable box.**

The easiest way to locate the executable is to right click on your AutoCAD icon and select Properties.



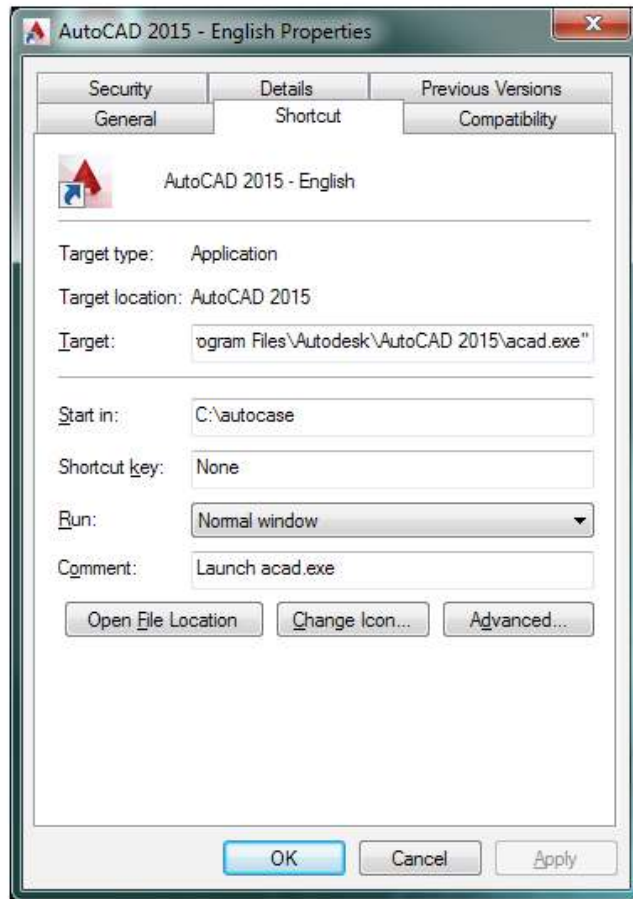
- The properties window will open. Copy the text from the Target box and paste it into the AutoCAD executable box at the installation window and remove any quote marks.

Examples:

2012 would look like this: C:\Program Files\Autodesk\AutoCAD 2012 - English\acad.exe

2015 would look like this: C:\Program Files\Autodesk\AutoCAD 2015\acad.exe

**Note: Currently Autocase will not load into AutoCAD 2016**



- Once the AutoCAD executable box has been filled in, select Begin. You will receive a message when the installation has completed.

- To start Autocase, select the gray cabinet icon from your desktop.

