

Contents

General Information.....	2
ADA Guidelines.....	3
HPL Standard Construction.....	4
HPL Solid Core	5
HPL Buildup.....	6
Epoxy Resin	7
Laboratory-Grade Phenolic Resin	8
Work Surface Supports	9-11
Work Surfaces and Supports Index	12

General Information

Please review the following for work surface information. Contact your Case Systems dealer for any clarifications.

Selection of the proper work surface material is essential for optimum function and durability. Many criteria must be assessed and prioritized before a material is selected. A partial listing of criteria is presented below but additional requirements may also be considered.

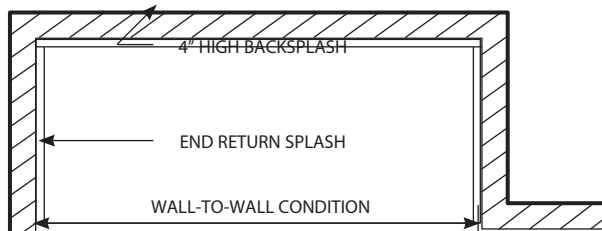
Configuration of work surfaces is also very important. Applications for wall-to-wall installations may require large pieces of material with sealed joints, back splashes and end return splashes. For modular or mobile applications, work surfaces may be supplied in small pieces with all edges finished.

Some work surface materials are available in more than one style. Integral splashes, various edge treatments and molded or machined recesses for containment are some of the variations possible.

Some of the most common work surface materials are described in this section. Other materials, such as solid surfacing material, natural stone, ESD materials and ceramics are also available. Consult your Case Systems representative for more information and assistance.

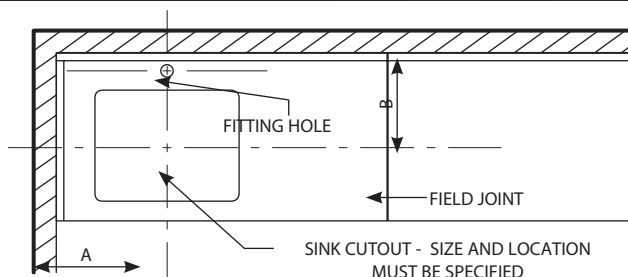
Selection Criteria:

- | | |
|---------------------|-------------------|
| abrasion resistance | heat resistance |
| chemical resistance | impact resistance |
| color | porosity |
| conductivity | stain resistance |
| decontamination | vandal resistance |
| hardness | water resistance |



When working with wall-to-wall conditions, work surfaces require a finished edge on the front only. It is necessary to confirm that dimensions are consistent at both the front and rear of the tops and that adequate clearance is allowed for placement of the work surface(s). Back splashes and end returns can be used as trim pieces for containment and aesthetics.

Work surfaces which will be used for island configurations must be finished on all four edges. Dimensions for island work surfaces should include an equal overhang on all four sides (nominally one inch). Back splashes are not generally used in island configurations. Work surfaces for peninsulas are usually finished on three sides.



Sink sizes, configurations and locations must be clearly indicated. Fitting hole sizes and locations are also necessary. Clearances of sink basins and fittings must be verified in relation to support structures and base cabinets. Placement of work surface joints should not jeopardize the strength or alignment of the finished work surface. Case Systems does not offer cutouts within laminate tops.

For additional information and technical assistance with various work surface materials please contact your Case Systems representative.

ADA Guidelines

Products labeled with the international symbol of accessibility have been designed to meet federal ADA guidelines as described below. In addition, most base cabinets are available in 34" height or can be adapted to meet federal guidelines. We may also be able to custom engineer a cabinet to suit your specific needs. Ask your Case Systems dealer for details.

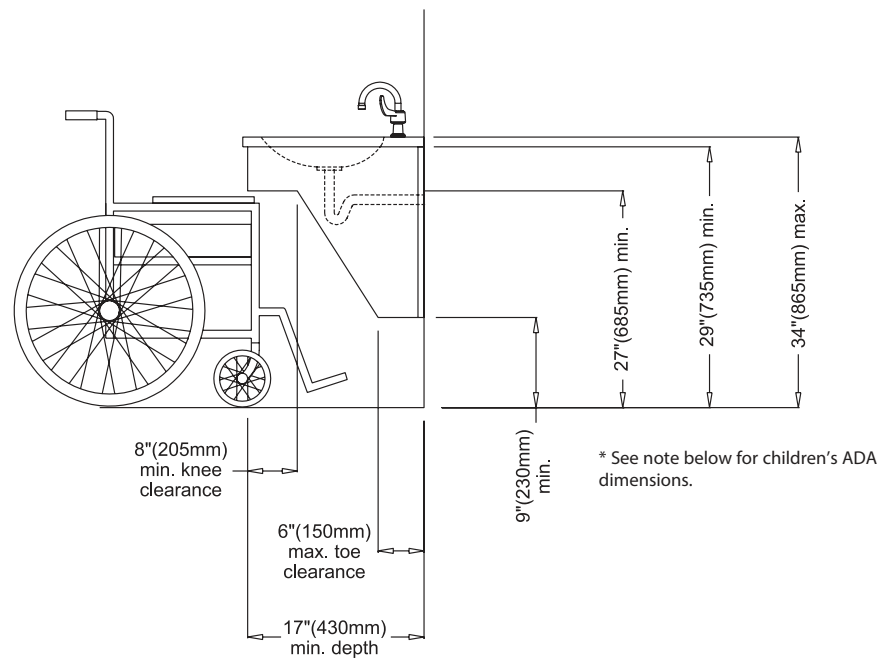
The information here refers to federal ADA requirements only. Local and state accessibility guidelines may include additional requirements.

Casework Design Guidelines

Worktops with cabinets below: Height is not to exceed 34"(865mm) above finished floor.

Work surfaces and tables: Work surface height is not to exceed 34"(865mm) above finished floor. Front apron clearance must be a minimum of 29"(735mm) above finished floor. Knee space of at least 27"(685mm) high, 30"(760mm) wide, and 19"(485mm) deep must be provided.

Built-in lavatories: See drawing below for required clearances.



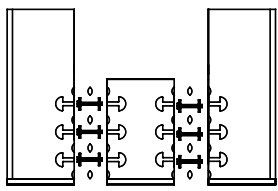
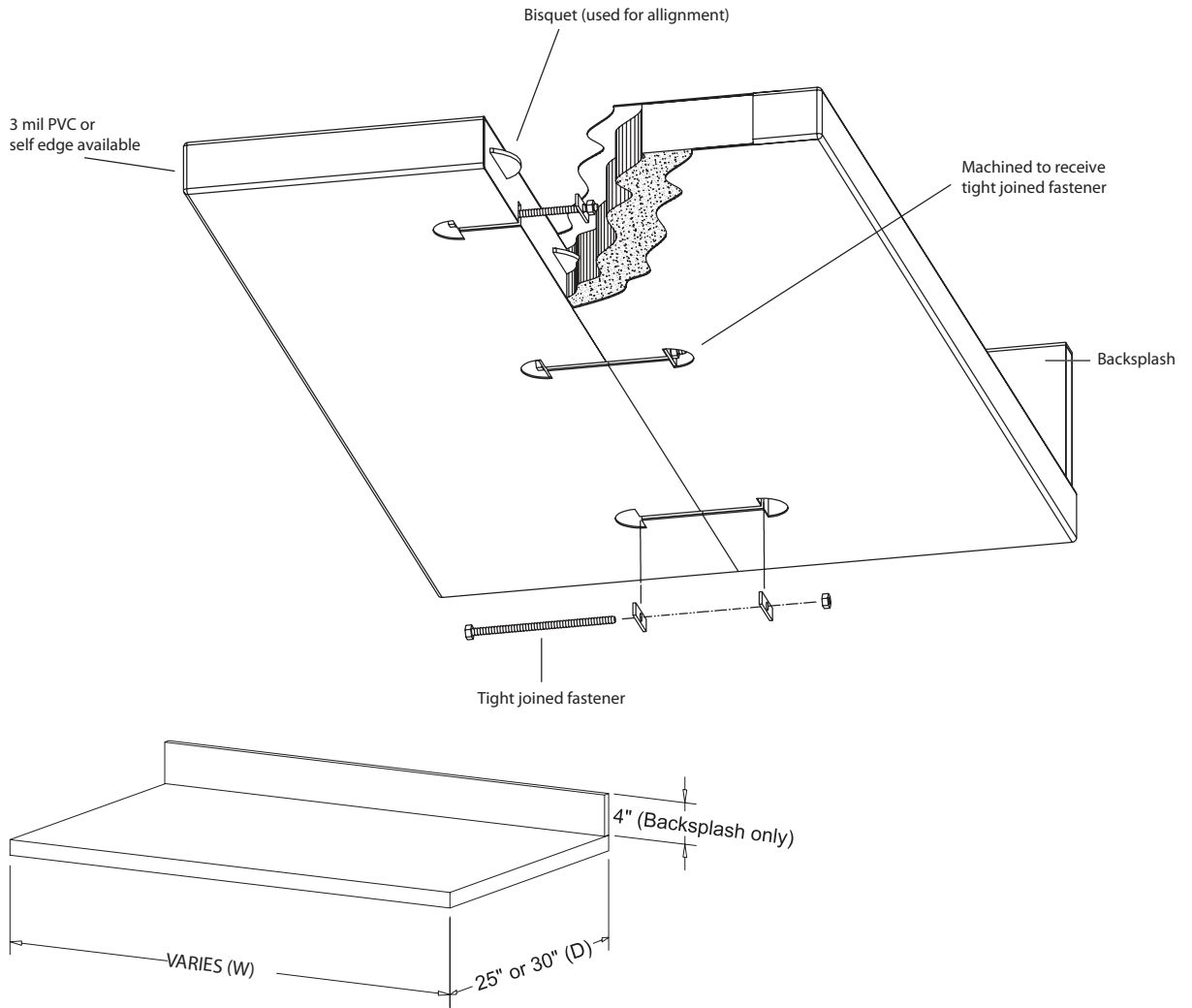
Note #1: Lavatories used primarily by children ages 6 through 12 are permitted to have apron and knee clearances (dimensions A&B) of 24" (610mm) high minimum provided that the rim or counter surface (dimension C) is no higher than 31" (760mm).

Note #2: Lavatories used primarily by children ages 5 and younger shall not be required to meet these clearances if clear floor space for parallel approach complies with ADA guidelines.

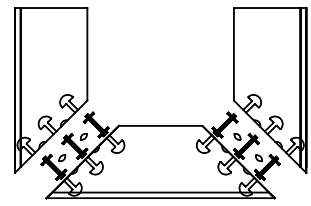
Storage shelving: Forward reach range must not be lower than 15" (381mm) above finished floor or higher than 48" (1220mm) above finished floor. Side reach range must not be lower than 15" (381mm) above finished floor or higher than 54" (1370mm).

Wardrobe rods: Clothes rod height is not to exceed 48"(1220mm) above finished floor.

HPL Standard Construction



BUTT JOINTS



MITRE JOINTS

HPL Solid Core

Particleboard is available in nominal 1-1/8", 1", 3/4"

Plywood is available in nominal 1", 3/4"

Available edges include 3mm PVC, High-Pressure Self-Edge and Wood edge (See note below for variations and differences)

Joinery: Tight Joined Fasteners

Corner Conditions: Butt Joint or Miter Joints

Plastic Laminate

Plastic laminate work surfaces are available in hundreds of colors, provide moderate chemical resistance and are suitable for most general laboratory applications. The high-pressure plastic laminate rigid PVC is securely bonded to a solid substrate and then fully backed for balanced construction. Nominal thickness is 1". The surface has reasonable chemical resistance to a wide range of acids, alkalis and solvents, with good stain and impact resistance. Durable, impact resistant 3mm PVC edges are machine applied utilizing water-resistant hot-melt adhesive and radiused at the top and bottom edges. Back and return splashes are separate and field applied.

Special Purpose Plastic Laminate

Utilizes the same construction as the standard plastic laminate work surface, but incorporates a plastic laminate surface with enhanced chemical resistance characteristics. Fewer color options are available.

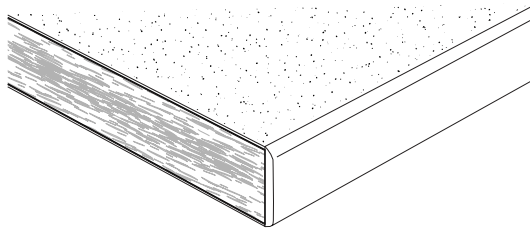
Wood Edge

Can be used only with 1-1/2" buildup and 1-1/8" solid core tops.

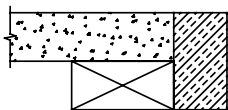
Available wood types: Oak and Maple

Finishes: Minwax stain or clear coat.

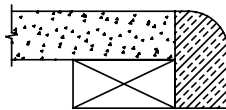
Back and return splashes are separate and field applied.



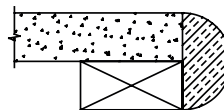
Wood Edge Options



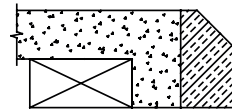
SQUARE EDGE FRONT
SHARP WOOD CORNERS ARE EASED



RADIUSED EDGE FRONT
SHARP WOOD CORNERS ARE EASED



BULLNOSE EDGE FRONT



BEVELED EDGE FRONT
SHARP WOOD CORNERS ARE EASED

HPL Buildup

Particleboard is available in nominal buildup 1-1/2" (maximum 12' lengths)

Plywood is available in nominal buildup 1-1/2" (maximum 8' lengths)

Available edge: Self-Edge or Wood-Edge

Joinery: Tight Joined Fasteners

Corner Conditions: Butt Joint or Miter Joints

Plastic Laminate

Plastic laminate work surfaces are available in hundreds of colors, provide moderate chemical resistance and are suitable for most general laboratory applications. The high-pressure plastic laminate self edge is securely bonded to a buildup core and fully balanced. Nominal thickness is 1-1/2" buildup. The surface has reasonable chemical resistance to a wide range of acids, alkalis and solvents, with good stain and impact resistance. Back and return splashes are separate and field applied.

Special Purpose Plastic Laminate

Utilizes the same construction as the standard plastic laminate work surface, but incorporates a plastic laminate surface with enhanced chemical resistance characteristics. Fewer color options are available.

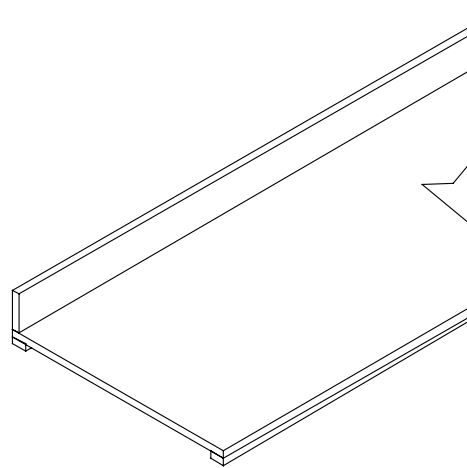
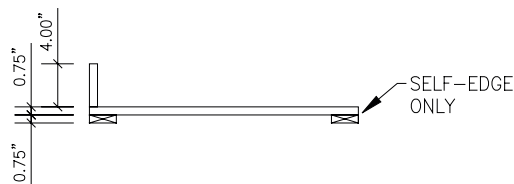
Wood Edge

Can be used only with 1-1/2" buildup and 1-1/8" solid core tops.

Available wood types: Oak and Maple

Finishes: Minwax stain or clear coat.

Back and return splashes are separate and field applied.



Epoxy Resin

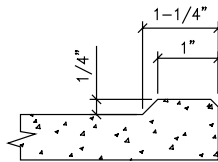
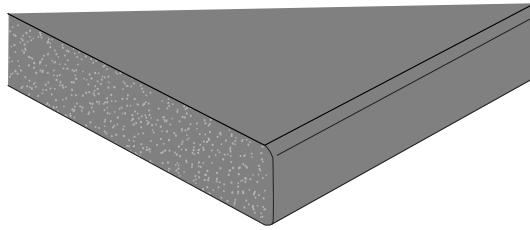
Size: 1" Black Core

Available edges include eased, beveled and marine

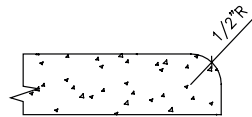
Joinery: Smooth On

Epoxy Resin

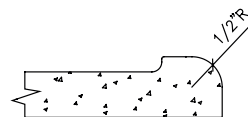
A monolithic thermosetting material composed of modified epoxy resin and a fine filler material. Liquid resin is poured into molds, which may have special shapes and details such as raised edges or back splashes. After curing, the material exhibits exceptional structural strength and excellent chemical resistance. Finished edges are the same material as the work surface. Thickness is generally 1" and four standard colors are available.



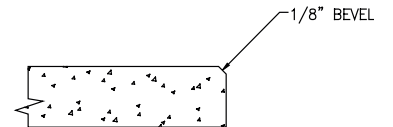
MARINE EDGE



CONTOURA



CONTOURA CONTROL



CLASSIC (STANDARD EDGE)

Laboratory-Grade Phenolic Resin

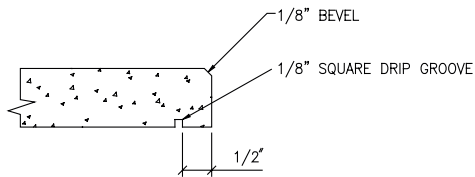
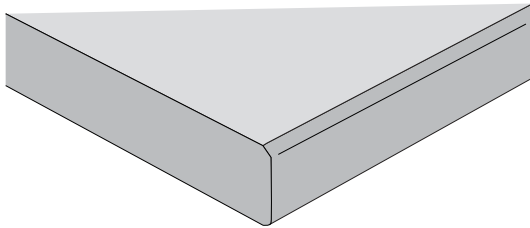
Size: 1", 3/4", 5/8"

Available edges include eased and beveled

Joinery: Tight Joined

Solid Phenolic

Solid phenolic is a high-pressure, thermoset black resin composite, formed throughout the thickness of the panel. The material is non porous, non-conductive with high impact resistance and superior structural strength. A variety of chemical-resistant surface finishes and many color options are available.

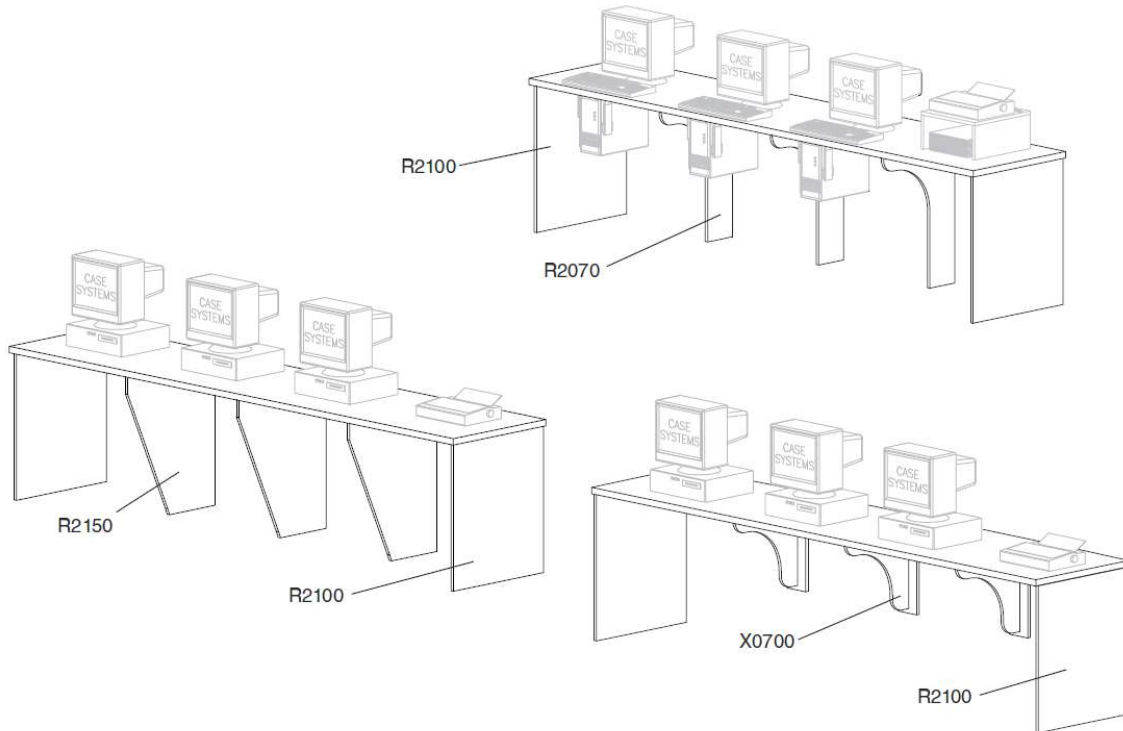


STANDARD EDGE

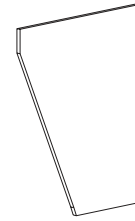
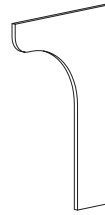
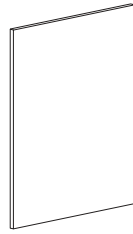
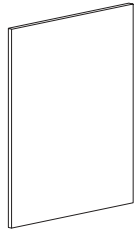
Work Surface Supports

Shown below are a few examples of commonly used work surface support systems. Create your own by using the supports featured here or refer to the Accessories section of this catalog for more options.

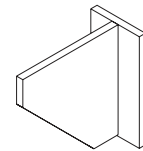
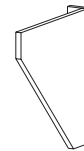
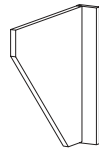
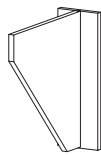
- Recommended span not to exceed 36".
- Width of 01" equals actual 3/4".



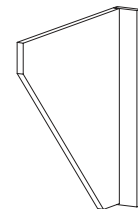
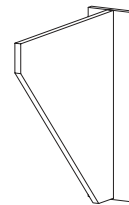
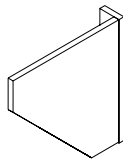
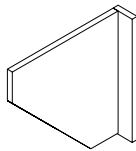
Work Surface Supports (cont'd)



CAT. NO.	R2100	R2180	R2070	R2150
DESCRIPTION	Leg Panel • Finished front edge only	Leg Panel • Finished front and back edge	Radiused Leg Panel • Radiused profile allows for additional leg room • .020 edge only	Angled Leg Panel
HEIGHT	26 30 32 34 36	26 30 32 34 36	26 30 32 34 36	26 30 32 34 36
DEPTH	12 14 16 18 21 24 29	12 14 16 18 21 24 29	24 29	24 29
WIDTH	01	01	01	01

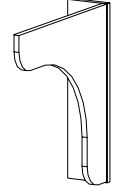
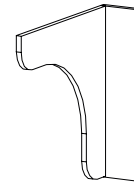
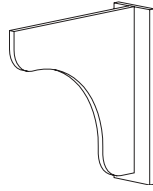
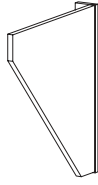


CAT. NO.	X0100	X0110	X0120	X0300
DESCRIPTION	Center Wall Mount Support Bracket	Left End Wall Mount Support Bracket	Right End Wall Mount Support Bracket	Center Wall Mount Support Bracket
HEIGHT	18	18	18	Equal to depth
DEPTH	18	18	18	12-39 (1" increments)
WIDTH	06	03	03	06

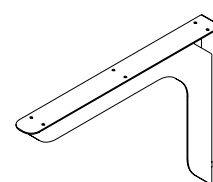
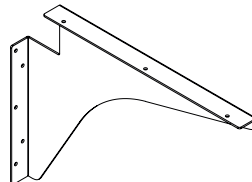
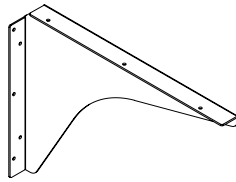


CAT. NO.	X0310	X0320	X0400	X0410
DESCRIPTION	Left End Wall Mount Support Bracket	Right End Wall Mount Support Bracket	Center Wall Mount Support Bracket	Left End Wall Mount Support Bracket
HEIGHT	Equal to depth	Equal to depth	24	24
DEPTH	12-39 (1" increments)	12-39 (1" increments)	24	24
WIDTH	03	03	06	03

Work Surface Supports (cont'd)



CAT. NO.	X0420	X0700	X0710	X0720
DESCRIPTION	Right End Wall Mount Support Bracket	Wall Mount Support Bracket • .020 edge only	Left End Wall Mount Support Bracket • .020 edge only	Right End Wall Mount Support Bracket • .020 edge only
HEIGHT	24	24	24	24
DEPTH	24	24	24	24
WIDTH	03	06	03	03



CAT. NO.	X0650	X0660	X0670
DESCRIPTION	Metal Work Surface Support Specify size: 6" h x 8" d x 2" w, 10" h x 14" d x 2" w, 15" h x 21" d x 2" w or 20" h x 26" d x 2" w Color: grey, light neutral, black, or white	Metal Work Surface Support Specify size: 10" h x 14" d x 2" w, 15" h x 21" d x 2" w or 20" h x 26" d x 2" w Cutout sizes: The 10" x 14" bracket has a 2.5" x 2" cutout, the 15" x 21" and 20" x 26" bracket have a 4" x 3" cutout. Color: grey, light neutral, black, or white	Metal Cantilevered Support • 11 gauge construction, powder-coated finish • Load rating of 200 lbs. per lineal foot Specify size: 18" h x 24" d x 2" w, 18" h x 18" d x 2" w, 12" h x 12" d x 2" w, 09" h x 12" d x 2" w Color: grey, light neutral, black, or white
HEIGHT	06 10 15 20	10 15 20	09 12 18
DEPTH	08 14 21 26	14 21 26	12 18 24
WIDTH	02	02	02

WARNING: Failure to adequately secure the work surface to the wall in conjunction with the use of any of the work surface supports pictured on this page or the previous page can result in the collapse of the work surface. Work surfaces should be secured to the wall within 1/2" of each work surface support with 1-1/2" x 1-1/2" angle. Maximum spacing for supports is 36" on center. See installation manual for details.

Work Surface Index

General Information	
Info. General Work Surface Information	2
Info. ADA Guidelines	3
Info. HPL Standard Construction	4
Info. HPL Solid Core	5
Info. HPL Buildup	6
Info. Epoxy Resin	7
Info. Laboratory-Grade Phenolic Resin	8
Work Surface Supports	
R2100 Leg Panel	10
R2180 Leg Panel	10
R2070 Radius Leg Panel	10
R2150 Angled Leg Panel	10
X0100 Center Wall Mount Support Bracket	10
X0110 Left End Wall Mount Support Bracket	10
X0120 Right End Wall Mount Support Bracket	10
X0300 Center Wall Mount Support Bracket	10
X0310 Left End Wall Mount Support Bracket	10
X0320 Right End Wall Mount Support Bracket	10
X0400 Center Wall Mount Support Bracket	10
X0410 Left End Wall Mount Support Bracket	10
X0420 Right End Wall Mount Support Bracket	11
X0700 Wall Mount Support Bracket	11
X0710 Left End Wall Mount Support Bracket	11
X0720 Right End Wall Mount Support Bracket	11
X0650 Metal Work Surface Support Bracket	11
X0660 Metal Work Surface Support Bracket	11
X0670 Metal Cantilevered Support	11
Work Surfaces and Supports Index	
Index All Work Surfaces and Supports	12